

PRESENT GROUND LEVEL 738.2±
 MAX. HIGH WATER LEVEL 743.0
 TOP PRESENT CASING 740.2±
 TOP EARTH BERL 745.0
 TOP PROPOSED PITLESS ADAPTOR 747.0
 CENTER LINE 4" PITLESS ADAPTOR DISCHARGE 734.5
 EXISTING CASING GROUTED 732 TO 718
 BOTTOM OF WELL 617.5

NOTES:
 STONE MONUMENT &
 FENCE TO BE RELOCATED
 BY OTHERS.

MATCH LINE (SEE SHEET 3)

EXIST. GROUND 738 ±

12' GRAVEL SERVICE ROAD TO
 BENT TREE COURT (BY OTHERS)

FOR FUTURE CONNECTION OF WELL No. 2

OUTLOT 95

CREEK CROSSING
 (SEE DETAIL SHEET 7)

WOOD POSTS AT
 1 ROD INTERVALS

APPROX. LIMITS OF
 D.I. 50 PIPE UNDER
 MONEY CREEK

MAINTAIN 10'
 SEPARATION

APPROX. TOP OF
 CREEK BANK

PUBLIC

OUTLOT 96

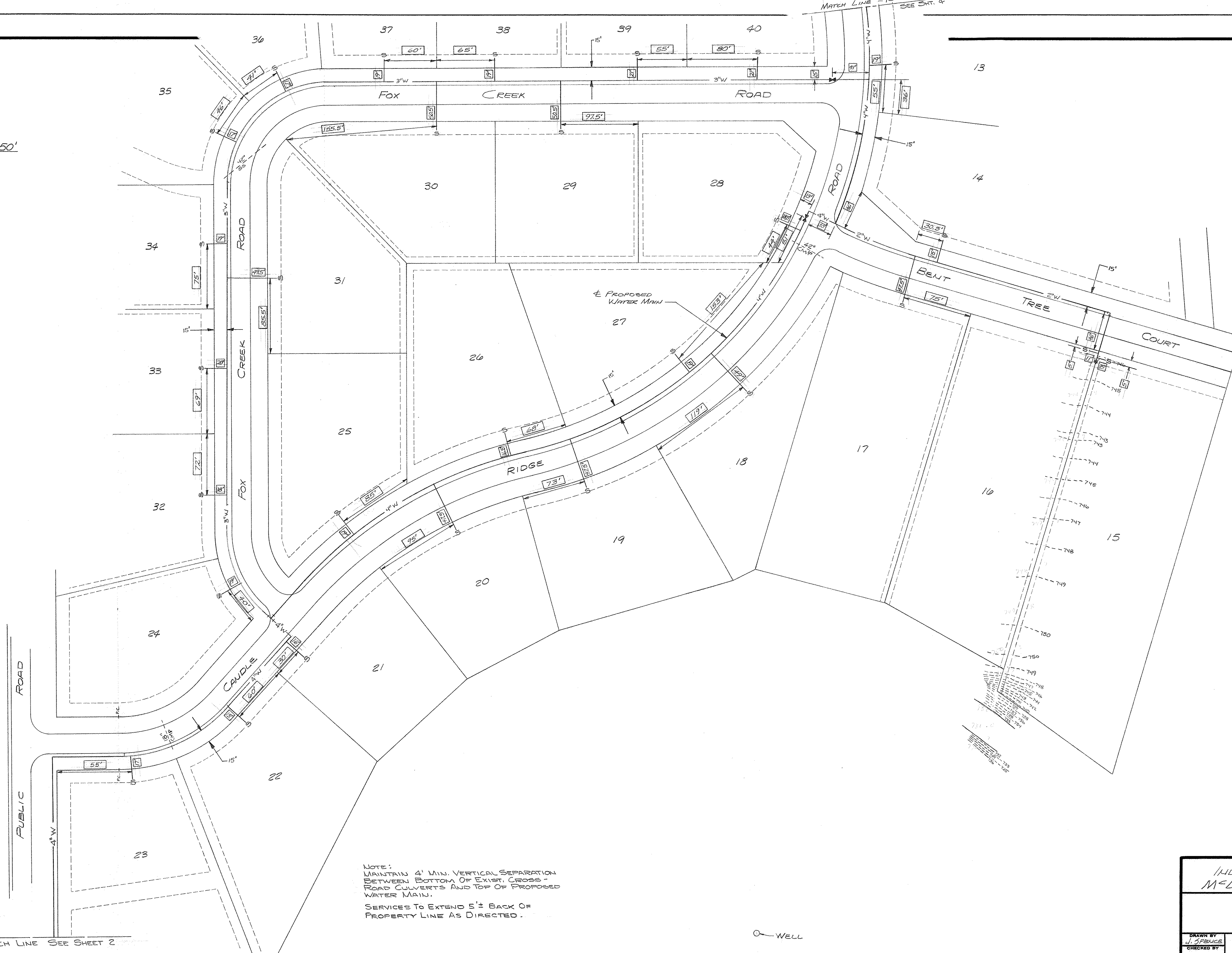
MATCH LINE (SEE SHEET 5)

N
 SCALE: 1" = 50'

INDIAN CREEK SUBN. M'LEAN COUNTY, ILLINOIS		
WATER MAIN		
DRAWN BY J.E. BATHMAN	FARNSWORTH & WYLIE CONSULTING ENGINEERS	FILE NO. 24-2592
CHECKED BY		DATE
BOOK NO. 1287-01	BLOOMINGTON, ILLINOIS	SHEET NO. 2 OF 7

RECORDED DRAWING 9-19-79 JB
 W.M. STD. DETAIL SHEET REMOVED
 3-23-00 JLP

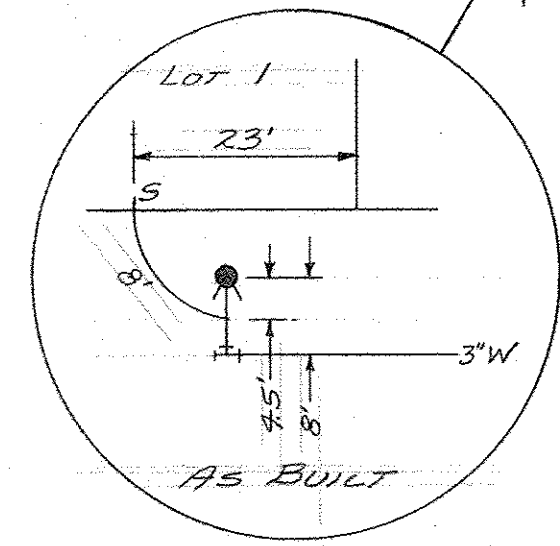
SCALE: 1" = 50'



NOTE:
 MAINTAIN 4' MIN. VERTICAL SEPARATION
 BETWEEN BOTTOM OF EXIST. CROSS-
 ROAD CULVERTS AND TOP OF PROPOSED
 WATER MAIN.
 SERVICES TO EXTEND 5'± BACK OF
 PROPERTY LINE AS DIRECTED.

INDIAN CREEK SUBDIVISION MCLEAN COUNTY, ILLINOIS		
WATER MAIN		
DRAWN BY J. SPENCE	FARNSWORTH & WYLIE CONSULTING ENGINEERS	FILE NO. 24-2592
CHECKED BY	BLOOMINGTON, ILLINOIS	DATE
BOOK NO.		SHEET NO. 3 of 7

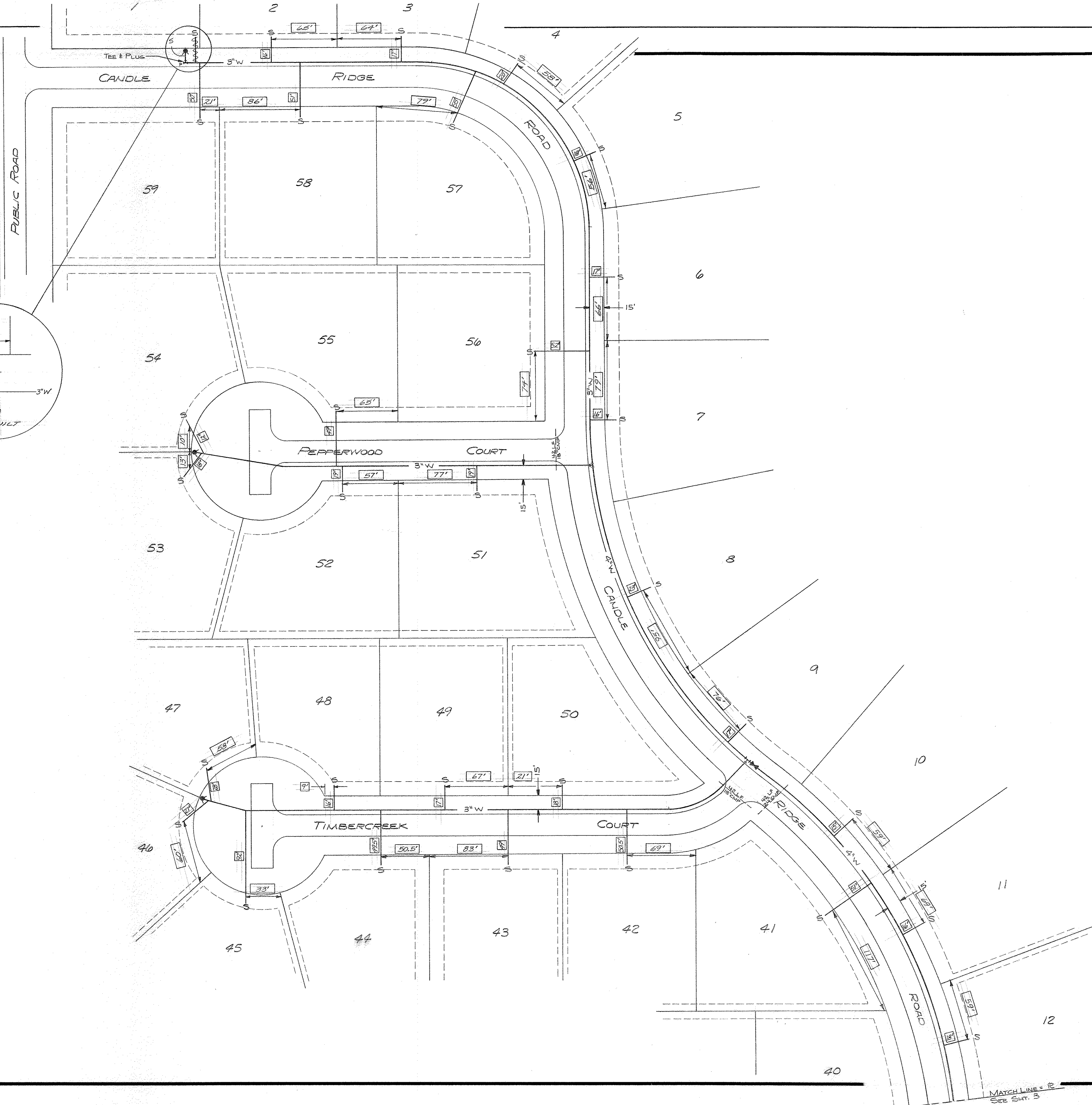
SCALE: 1" = 50'



LEGEND

PROPOSED

4" W	WATER MAIN
	GATE VALVE
	FLUSH HYDRANT
	WATER SERVICE



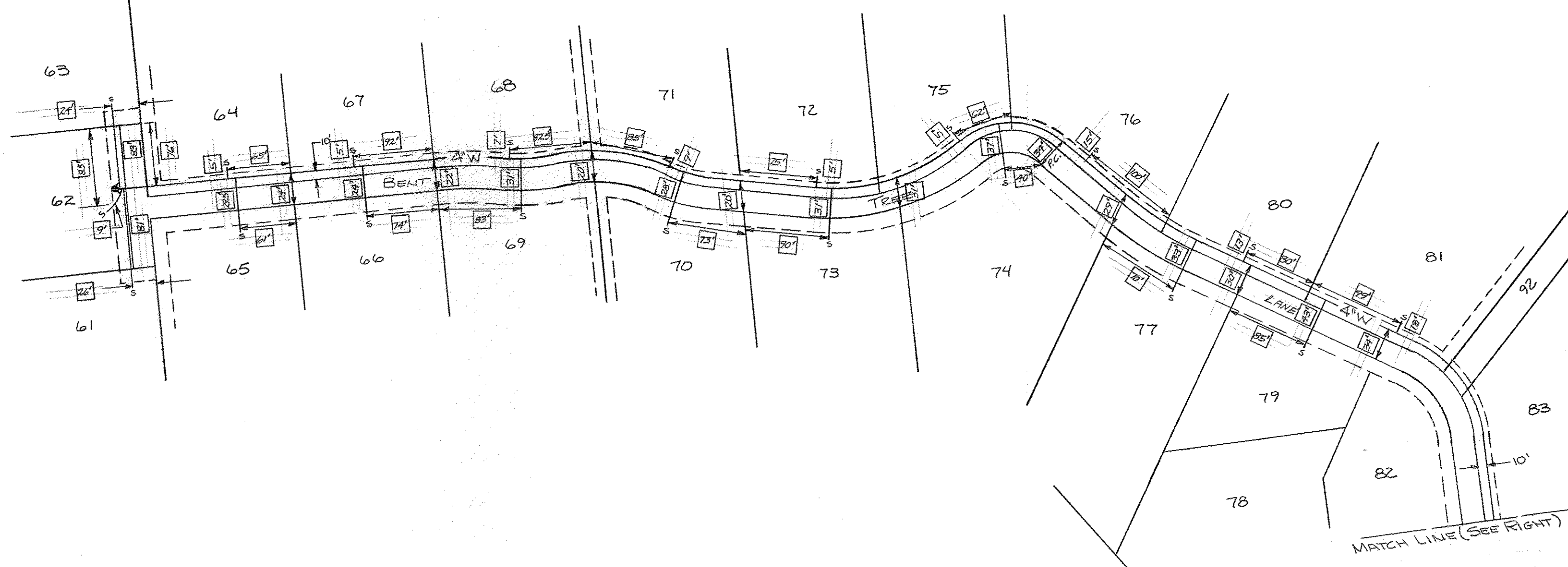
INDIAN CREEK SUBN. MCLEAN COUNTY, ILLINOIS	
WATER MAINS	
DRAWN BY JAWP	FILE NO. 24-2592
CHECKED BY	DATE
BOOK NO.	SHEET NO. 4 OF 7
FARNSWORTH & WYLIE CONSULTING ENGINEERS BLOOMINGTON, ILLINOIS	

RECORD DRAWING 9-20-79

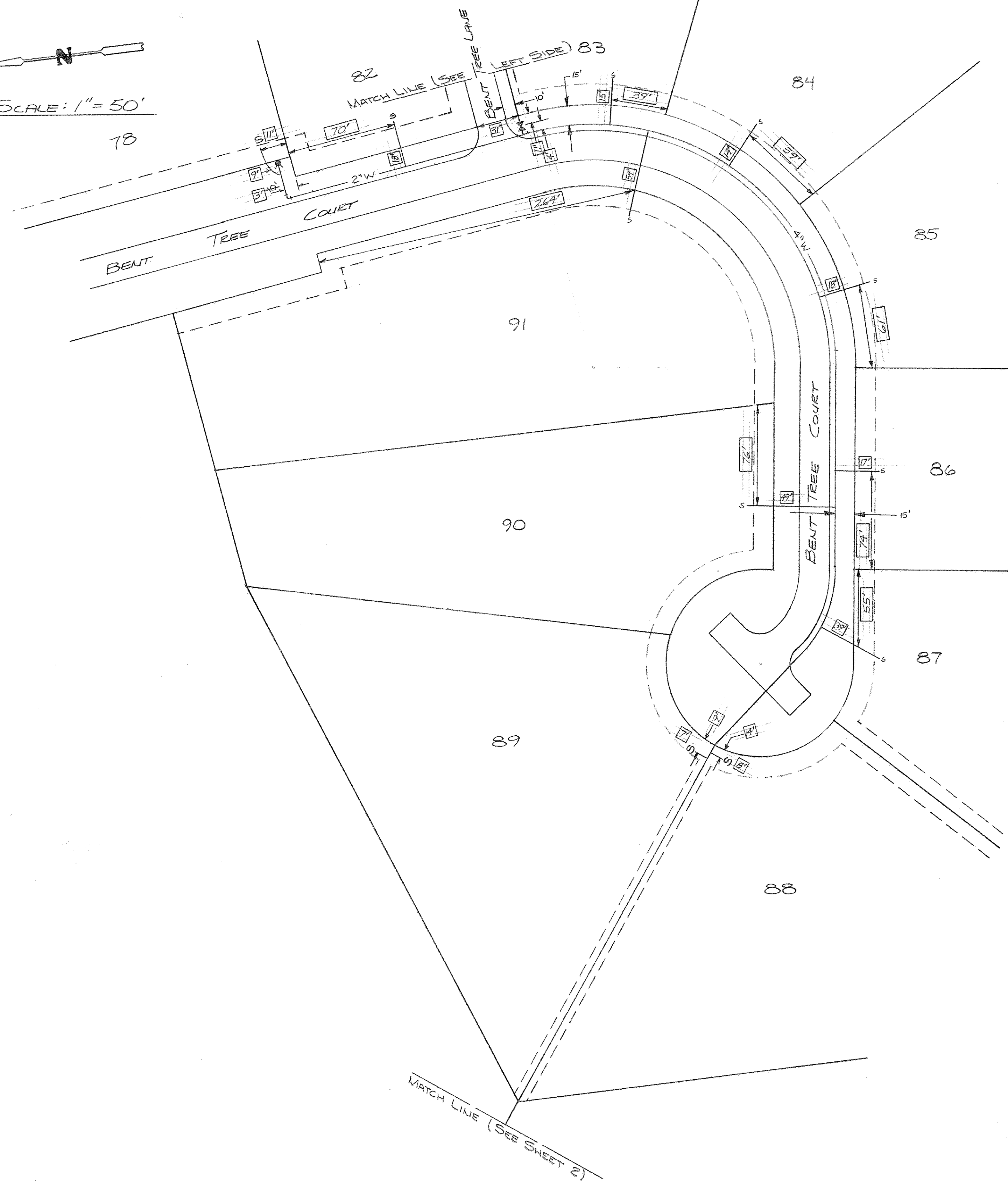
MATCH LINE - R
SEE SH. 3



SCALE: 1" = 100'



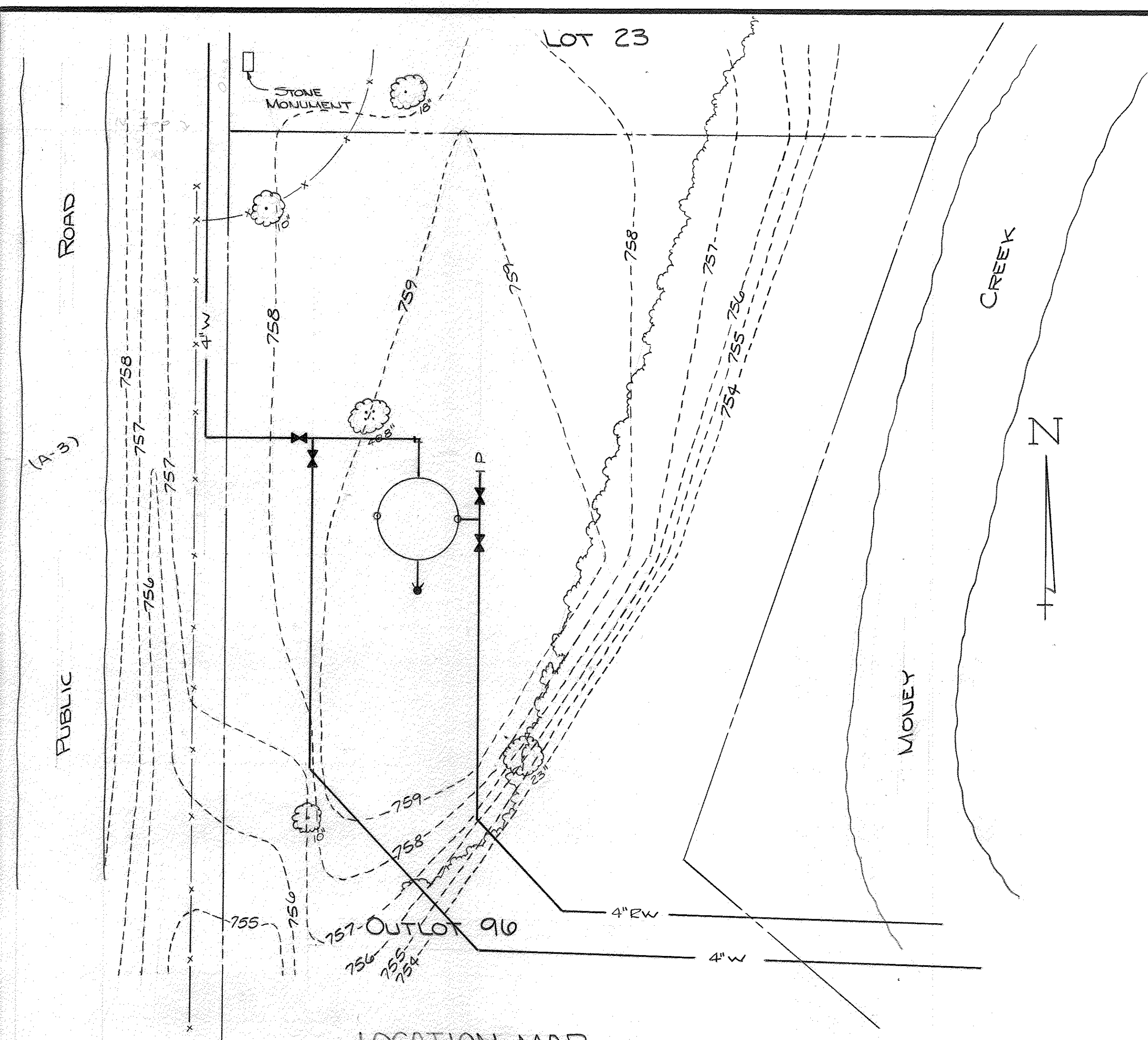
SCALE: 1" = 50'



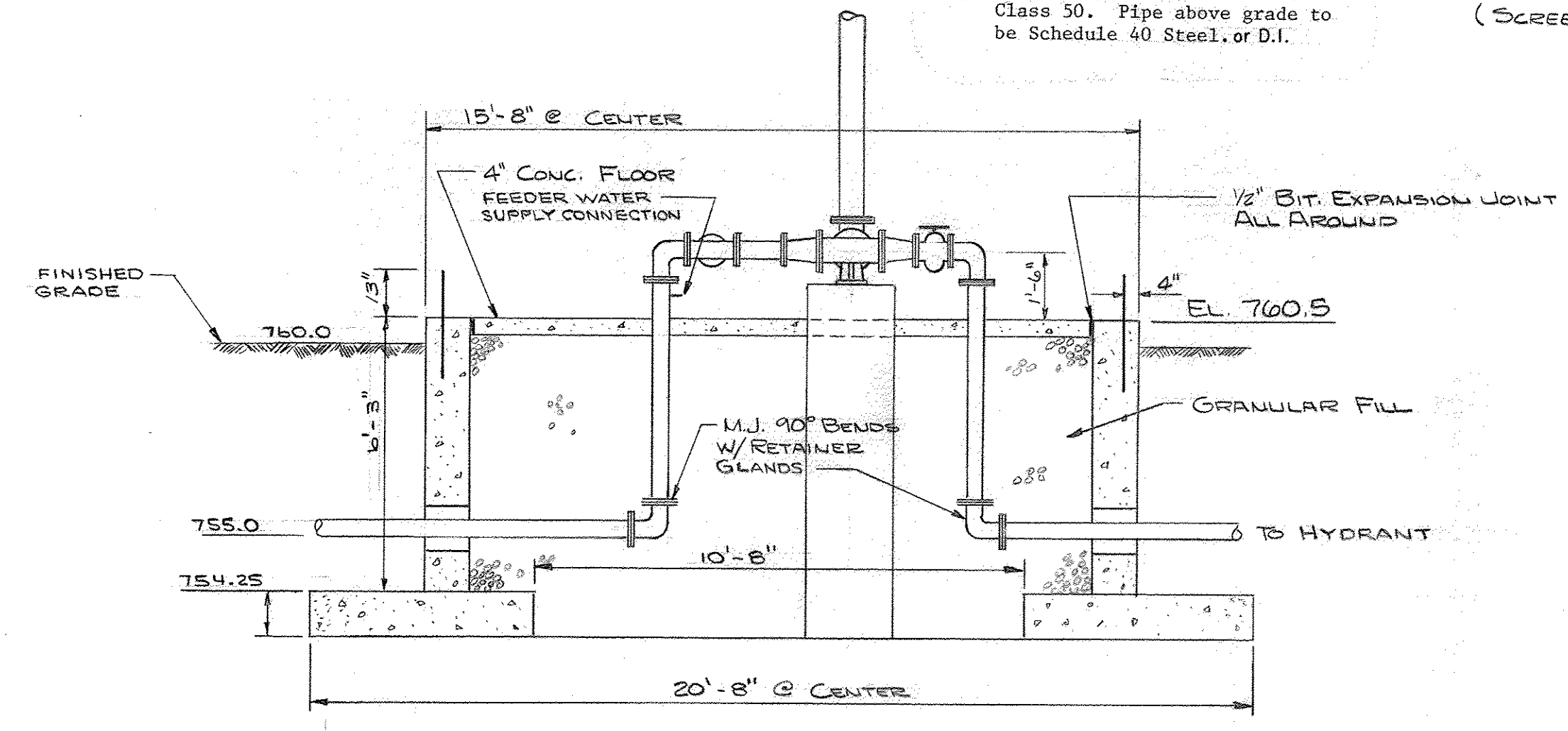
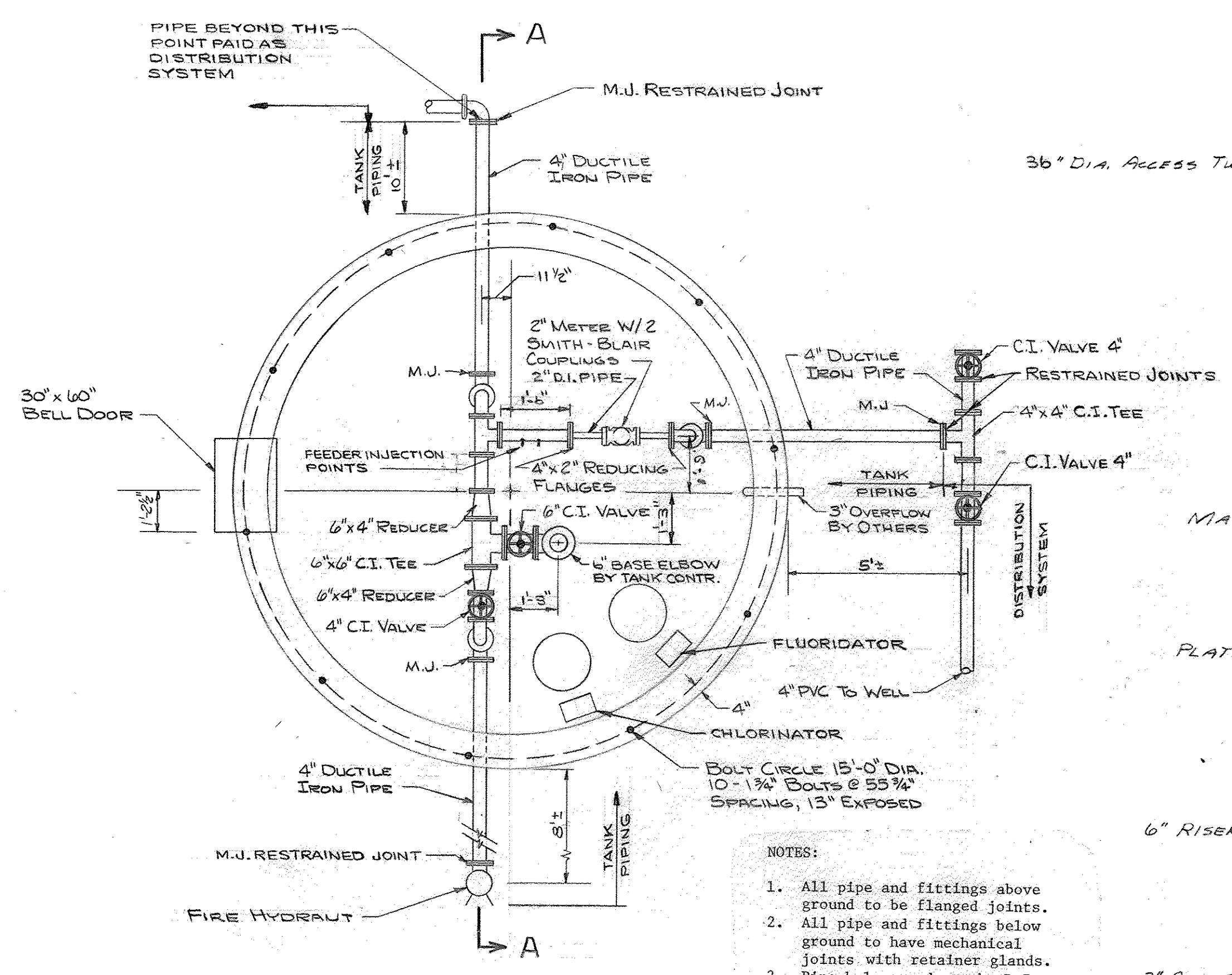
WELL

INDIAN CREEK SUBN MCLEAN COUNTY, ILLINOIS		
WATER MAIN		
DRAWN BY J. SPENCE	FARNSWORTH & WYLIE CONSULTING ENGINEERS BLOOMINGTON, ILLINOIS	FILE NO. 24-2592
CHECKED BY		DATE
BOOK NO.		SHEET NO. 5 of 7

RECORD DRAWING 9-20-79 JE

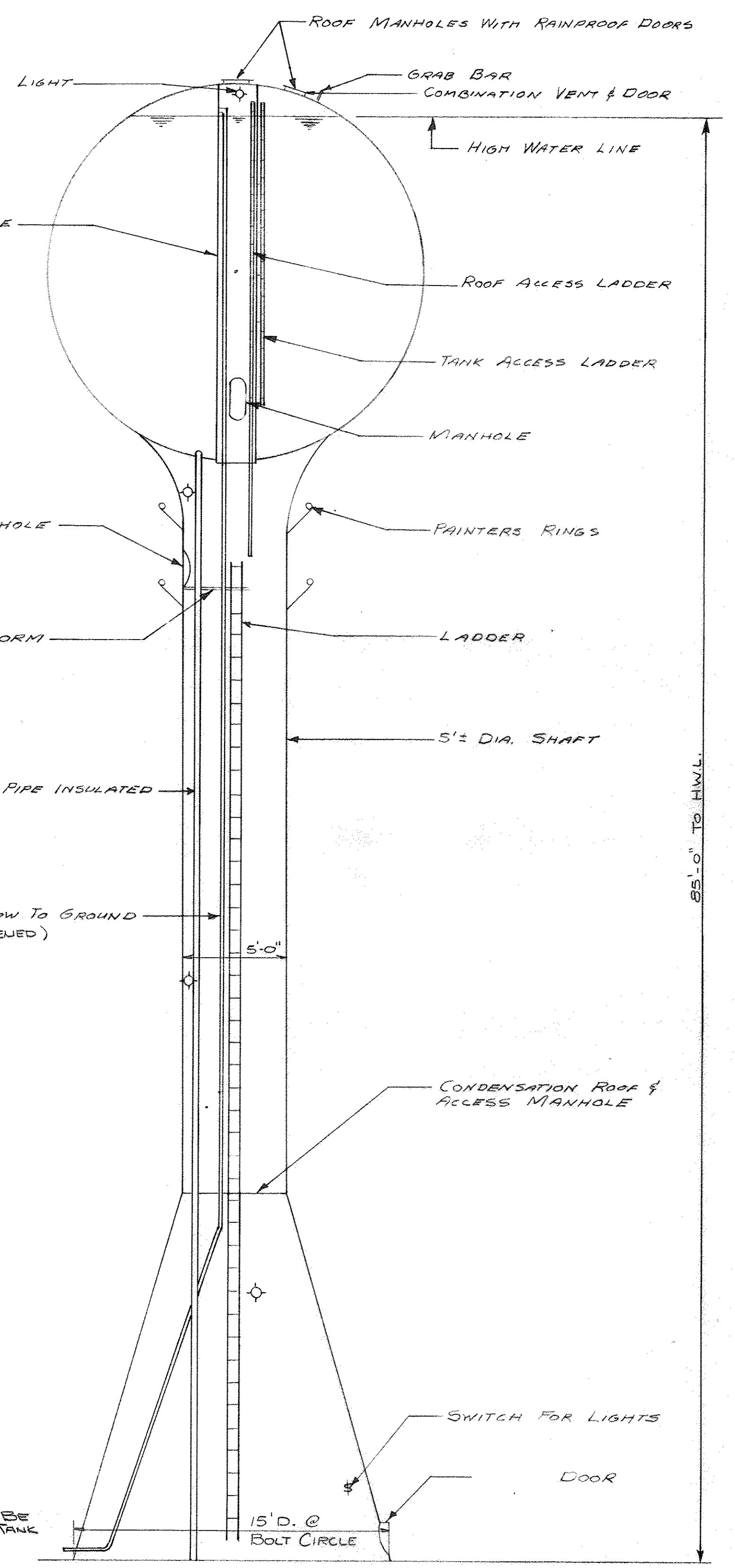


LOCATION MAP
SCALE: 1" = 20'

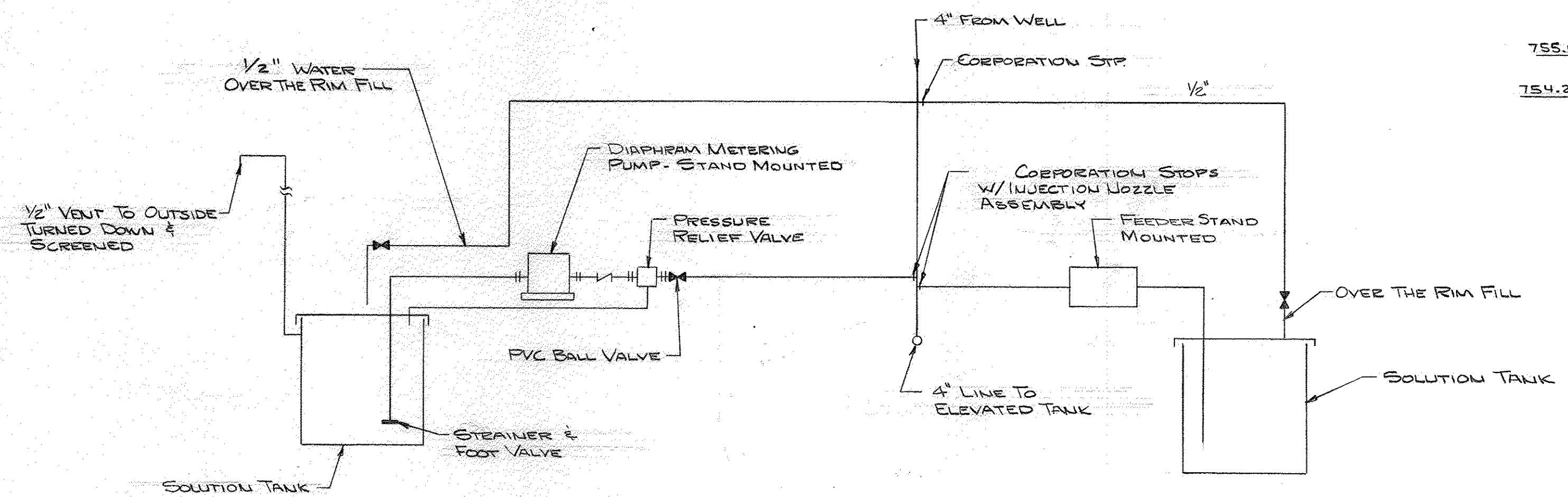


SECTION A-A

NOTE: REINF. STEEL DESIGN TO BE FURNISHED BY ELEVATED TANK CONTRACTOR.



GENERAL ELEVATION



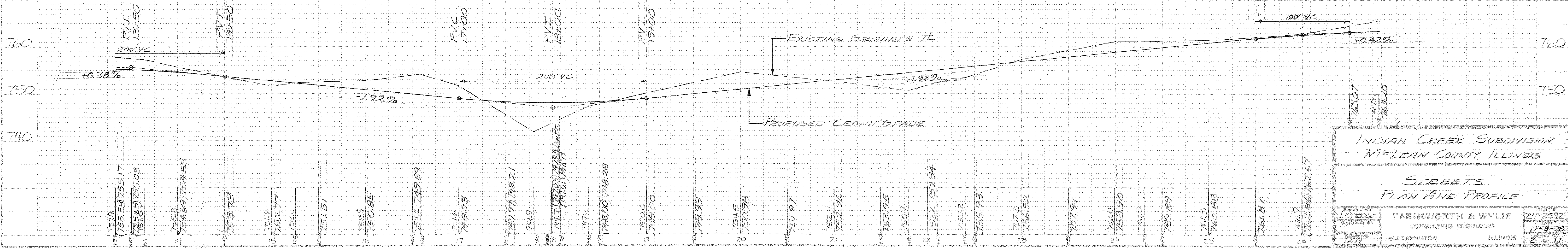
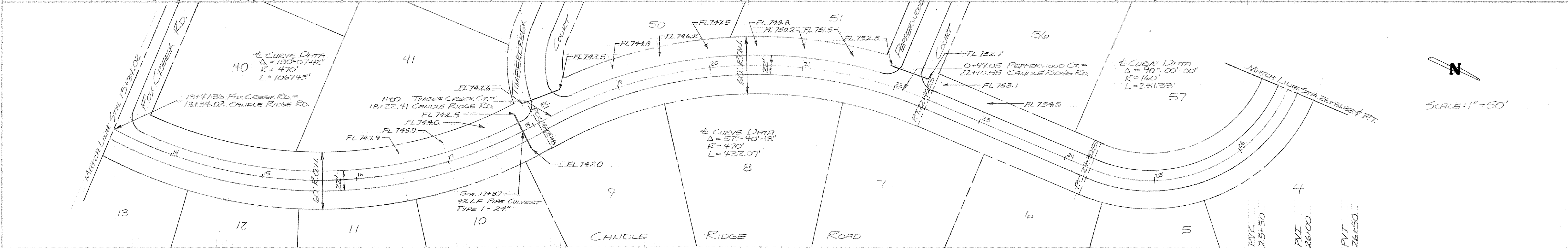
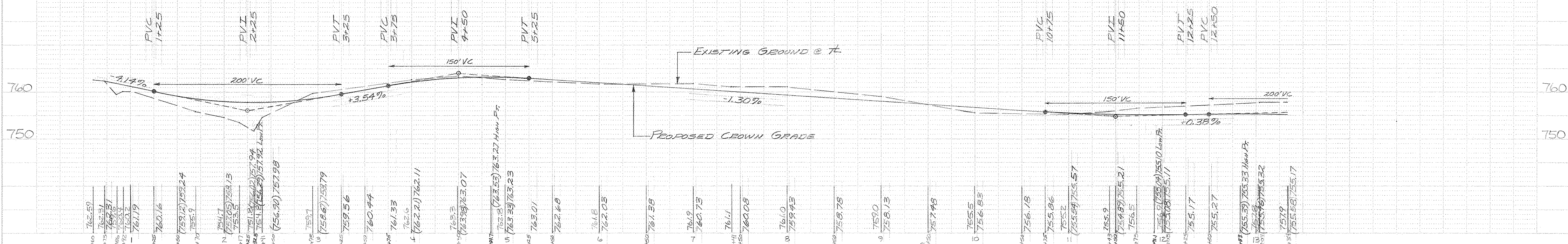
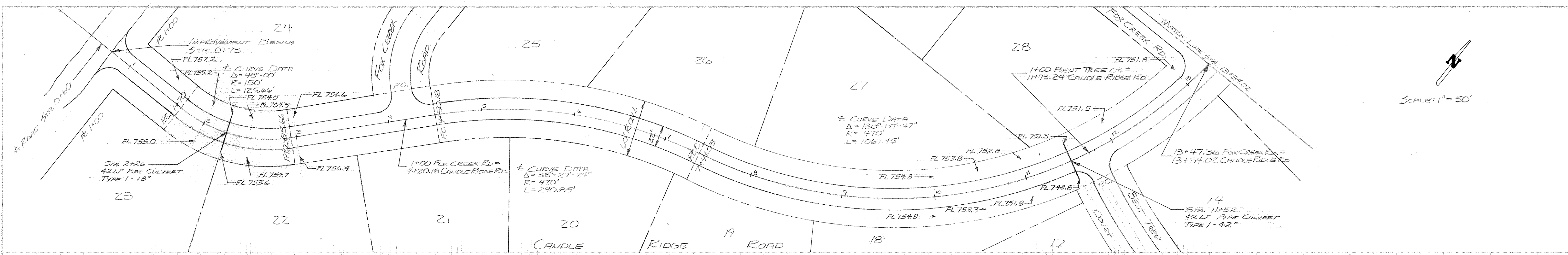
FLUORIDE SCHEMATIC

CHLORINATION SCHEMATIC

INDIAN CREEK SUBDIVISION MCLEAN COUNTY, ILLINOIS		
ELEVATED TANK CHLORINATION & FLUORIDATION		
DRAWN BY M.W.F.P.	FARNSWORTH & WYLIE CONSULTING ENGINEERS BLOOMINGTON, ILLINOIS	FILE NO. 24-2576
CHECKED BY		DATE
BOOK NO.		SHEET NO. 6 OF 7

DATE	
BY	
NO. OF WAY CHECKED	
NO. OF VERT. CHECKED	
NO. OF HOR. CHECKED	
NO. OF PLAN CHECKED	
NO. OF PROFILE CHECKED	
NO. OF CROSS SECTIONS CHECKED	
NO. OF ELEVATION CHECKED	
NO. OF DISTANCE CHECKED	
NO. OF AREA CHECKED	
NO. OF VOLUME CHECKED	
NO. OF GRADE CHECKED	
NO. OF CURVE CHECKED	
NO. OF SLOPE CHECKED	
NO. OF OFFSET CHECKED	
NO. OF CORNER CHECKED	
NO. OF INTERSECTION CHECKED	
NO. OF ADJUSTMENT CHECKED	
NO. OF REVISION CHECKED	
NO. OF APPROVAL CHECKED	
NO. OF RECORD CHECKED	
NO. OF AS-BUILT CHECKED	
NO. OF FINAL CHECKED	

DATE	
BY	
NO. OF WAY CHECKED	
NO. OF VERT. CHECKED	
NO. OF HOR. CHECKED	
NO. OF PLAN CHECKED	
NO. OF PROFILE CHECKED	
NO. OF CROSS SECTIONS CHECKED	
NO. OF ELEVATION CHECKED	
NO. OF DISTANCE CHECKED	
NO. OF AREA CHECKED	
NO. OF VOLUME CHECKED	
NO. OF GRADE CHECKED	
NO. OF CURVE CHECKED	
NO. OF SLOPE CHECKED	
NO. OF OFFSET CHECKED	
NO. OF CORNER CHECKED	
NO. OF INTERSECTION CHECKED	
NO. OF ADJUSTMENT CHECKED	
NO. OF REVISION CHECKED	
NO. OF APPROVAL CHECKED	
NO. OF RECORD CHECKED	
NO. OF AS-BUILT CHECKED	
NO. OF FINAL CHECKED	



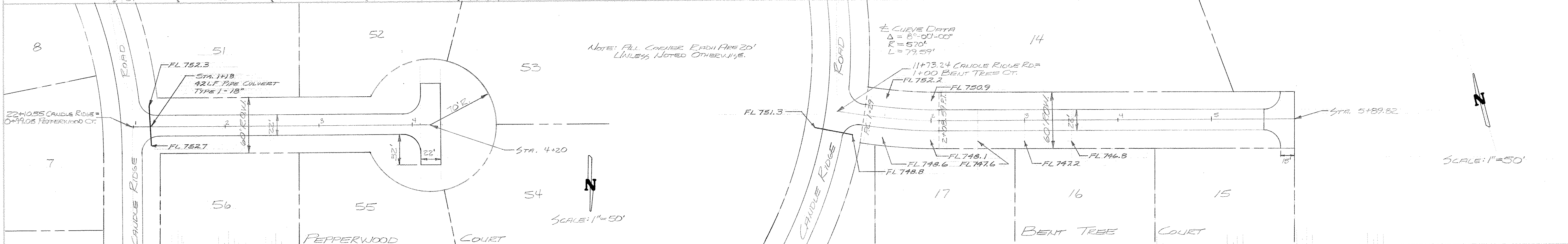
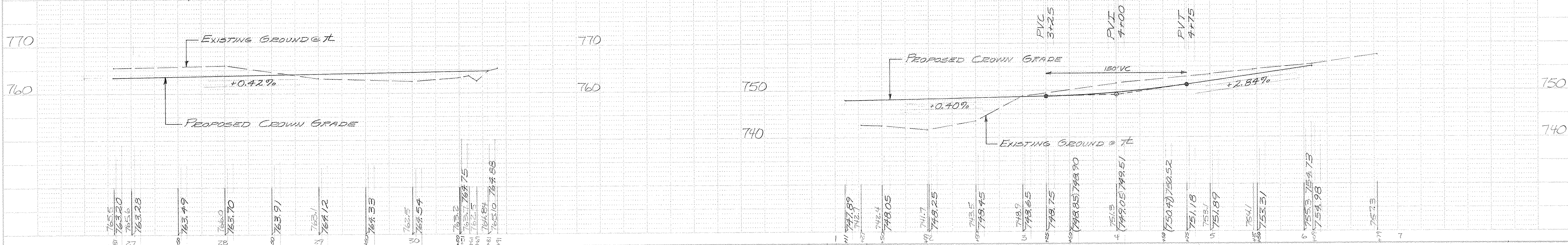
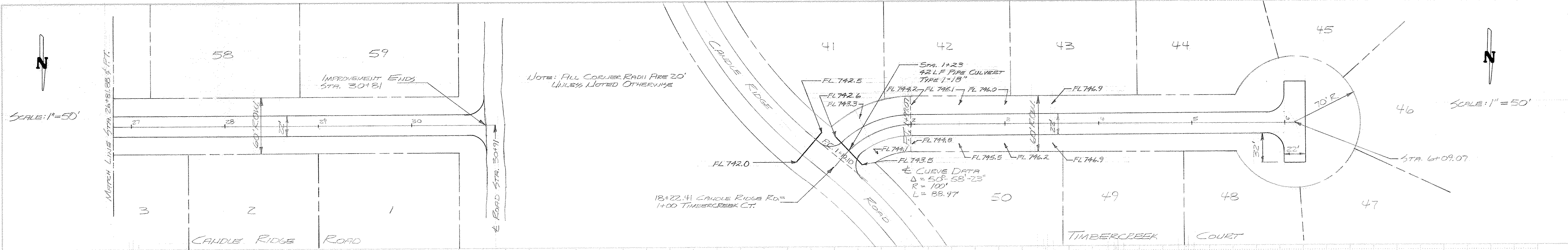
INDIAN CREEK SUBDIVISION
McLEAN COUNTY, ILLINOIS

STREETS
PLAN AND PROFILE

DESIGNED BY	FARNSWORTH & WYLIE	PROJECT NO.	24-2592
DRAWN BY	CONSULTING ENGINEERS	DATE	11-8-78
CHECKED BY	BLOOMINGTON, ILLINOIS	SHEET NO.	2 OF 11

DATE	
BY	
NO.	
PLANNING	
DESIGN	
CHECKED	
APPROVED	

DATE	
BY	
NO.	
PROFILE	
DESIGN	
CHECKED	
APPROVED	



INDIAN CREEK SUBDIVISION
M^cLEAN COUNTY, ILLINOIS

STREETS
PLAN AND PROFILE

DESIGNED BY
J. SPENCER

CHECKED BY
J. SPENCER

FILE NO.
24-2572

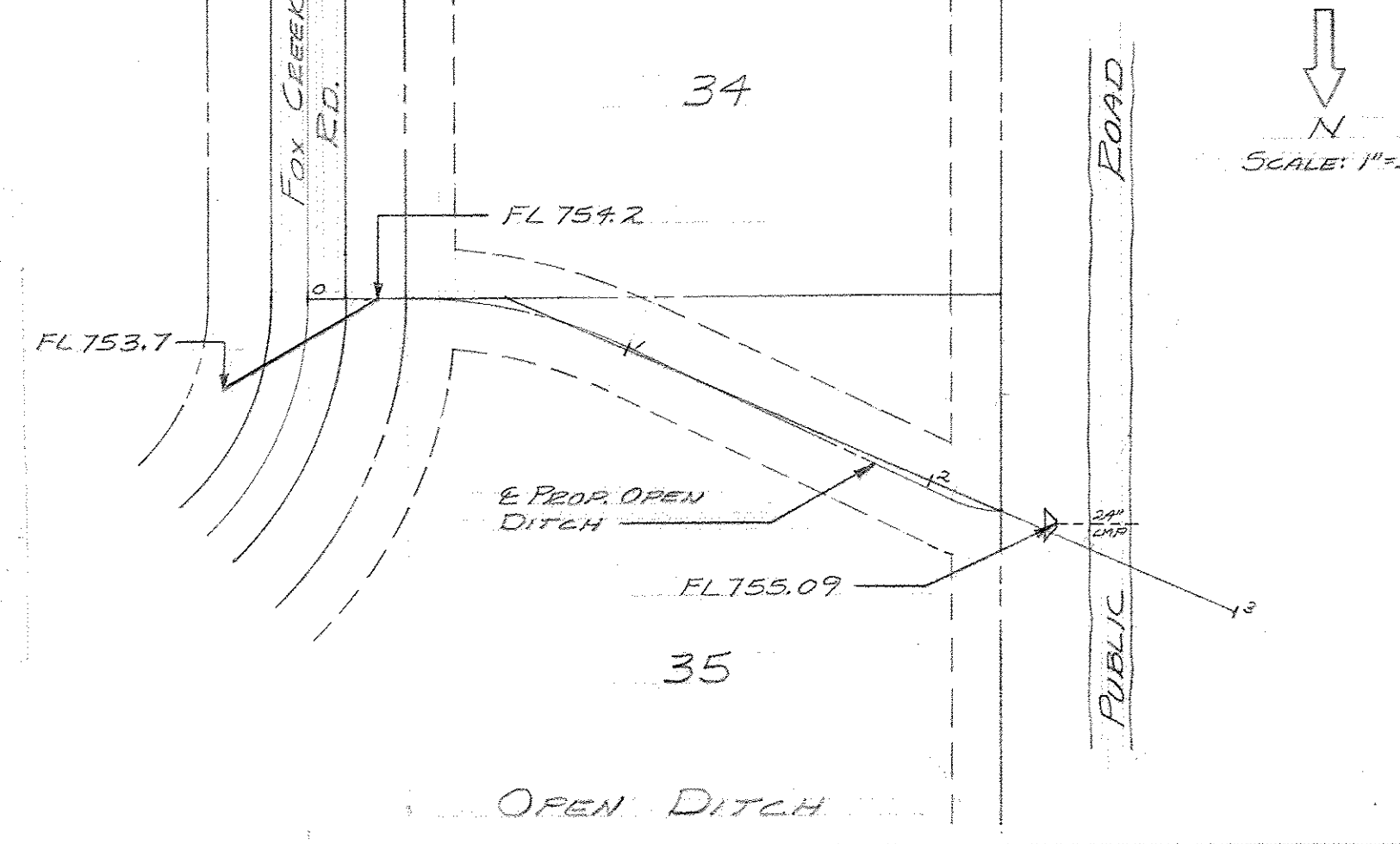
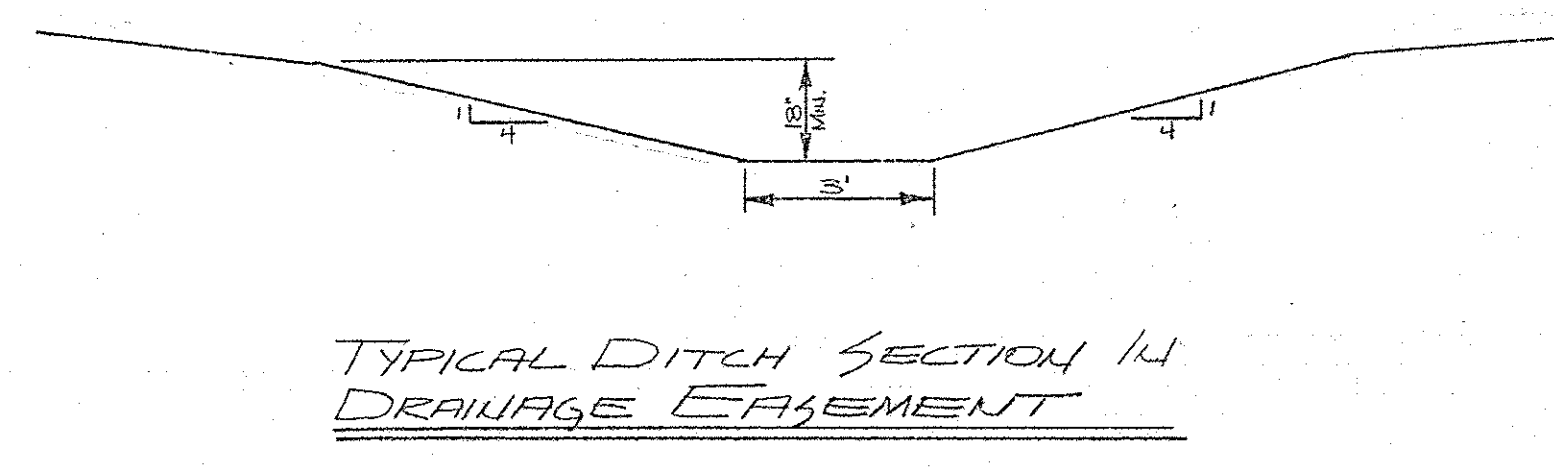
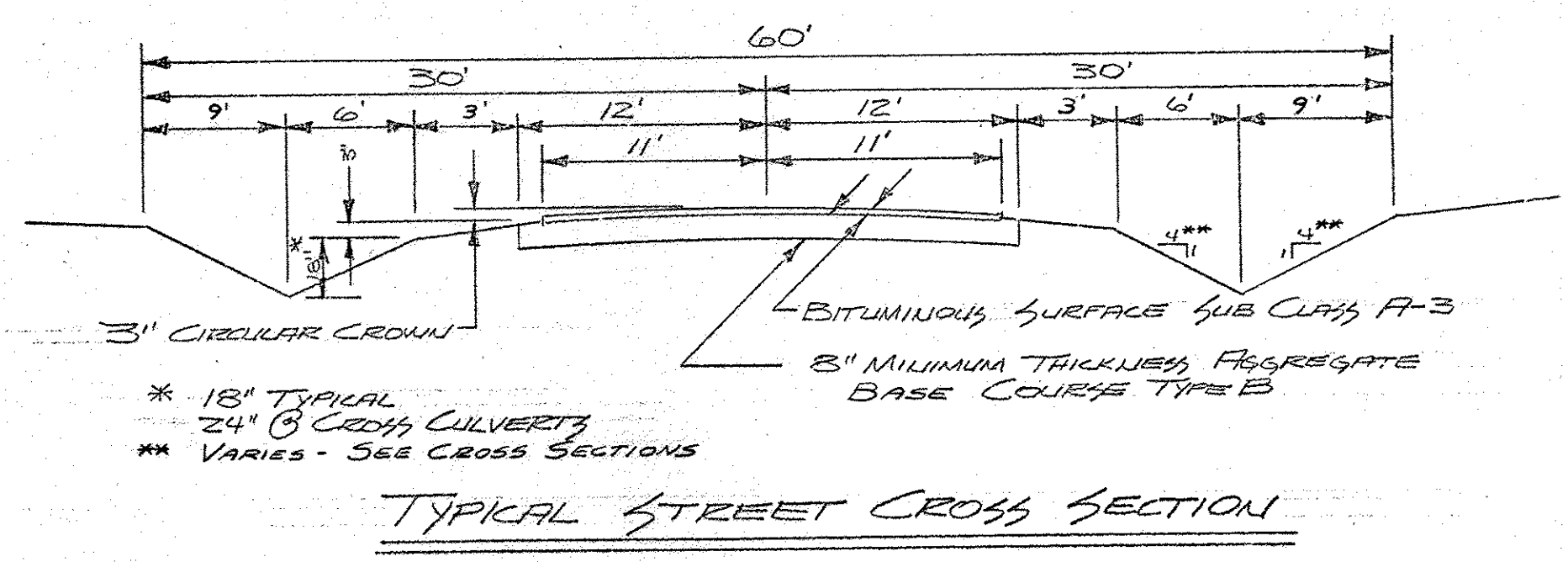
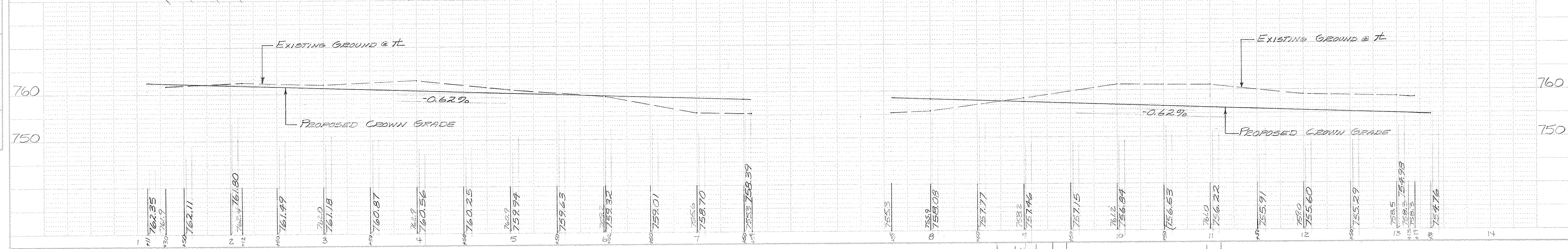
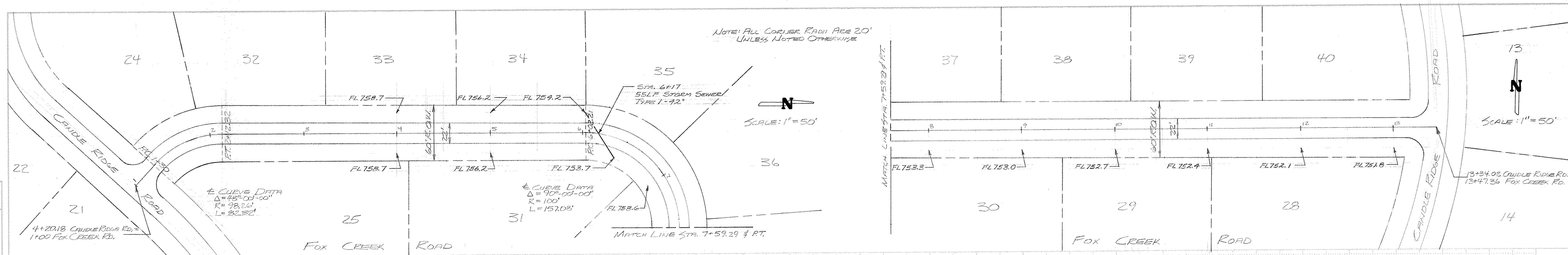
DATE
11-8-78

3 OF 11

FARNSWORTH & WYLIE
CONSULTING ENGINEERS
BLOOMINGTON, ILLINOIS

PLAN
 SURVEYED...
 PLOTTED...
 CHECKED...
 DATE...

PROFILE
 SURVEYED...
 PLOTTED...
 CHECKED...
 DATE...



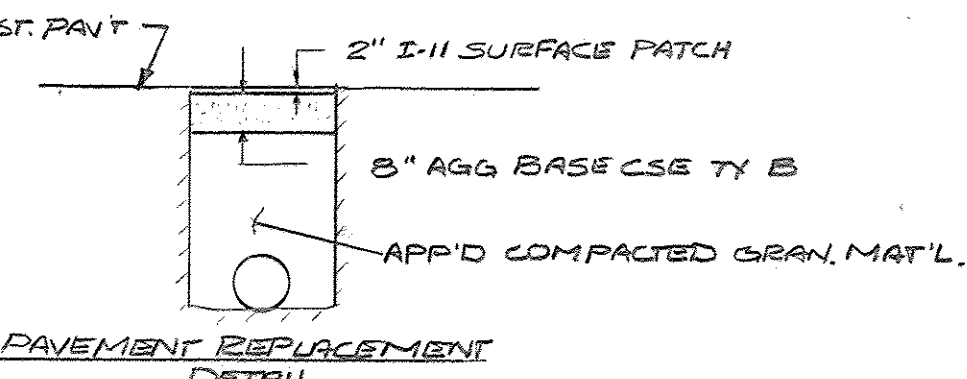
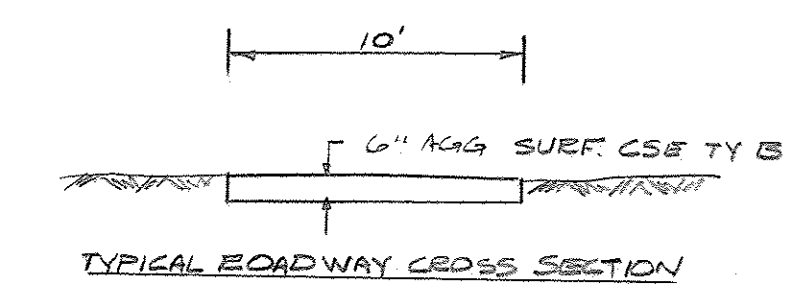
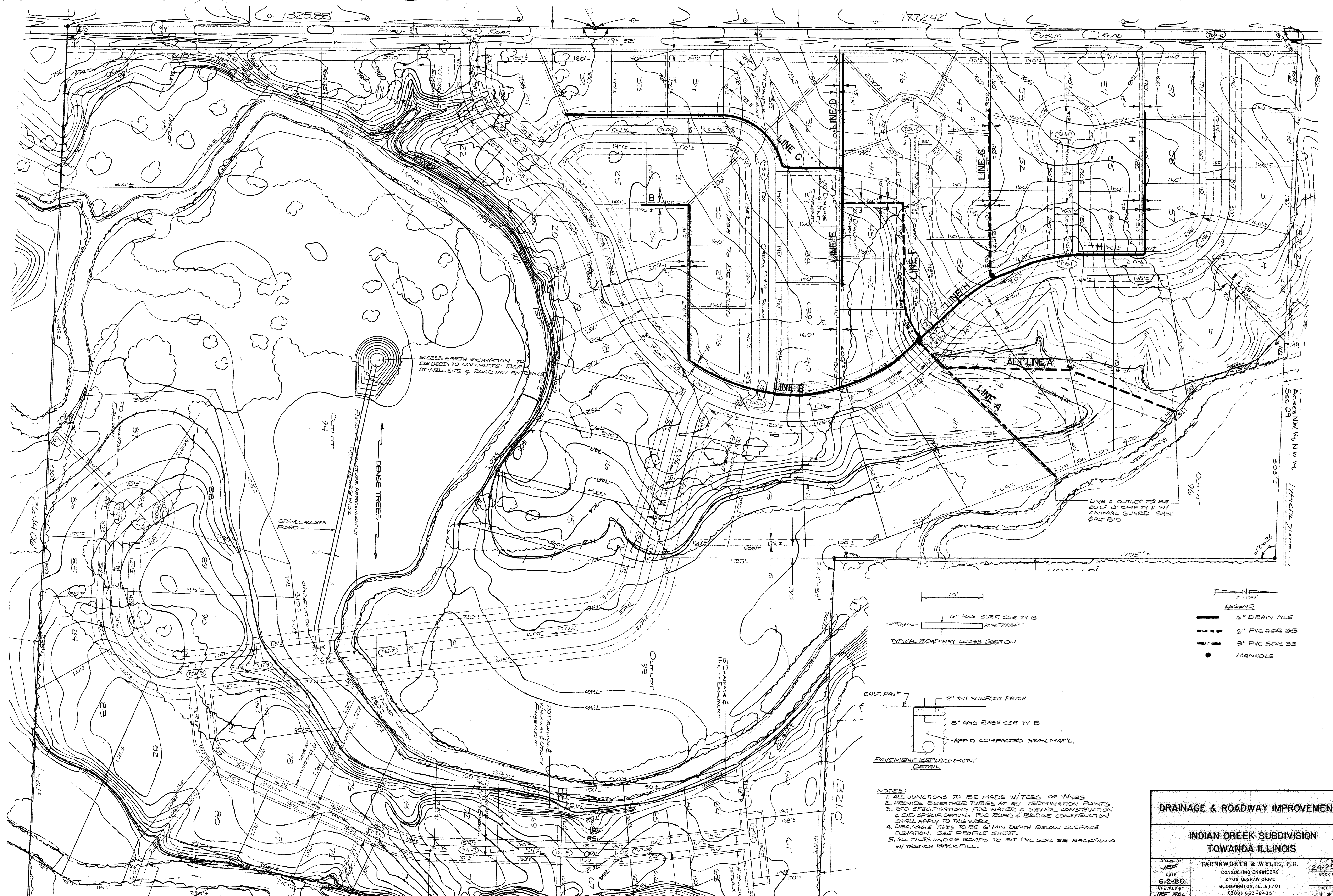
INDIAN CREEK SUBDIVISION
 McLEAN COUNTY, ILLINOIS

STREETS
 PLAN AND PROFILE

DESIGNED BY: J. SPELKE
 CHECKED BY: J. SPELKE
 DATE: 12/11

FARNSWORTH & WYLIE
 CONSULTING ENGINEERS
 BLOOMINGTON, ILLINOIS

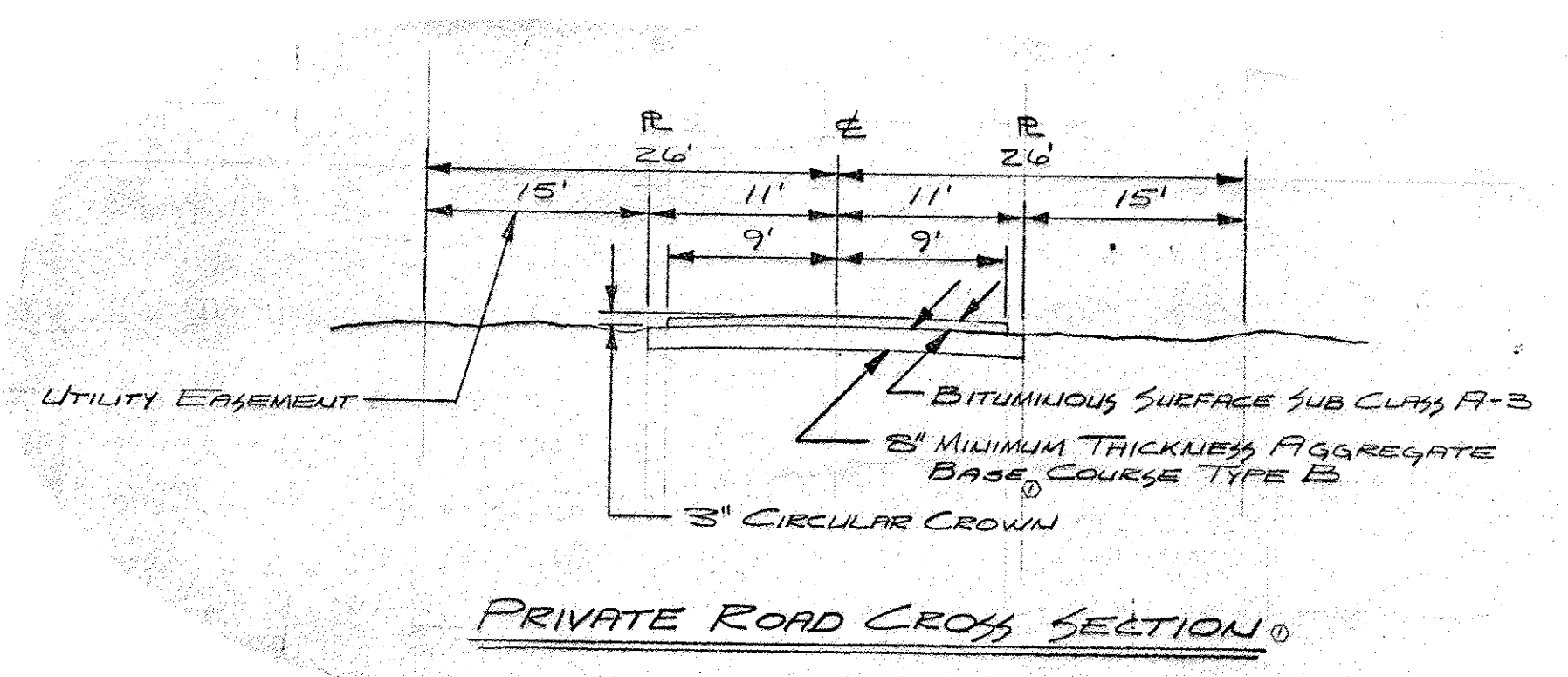
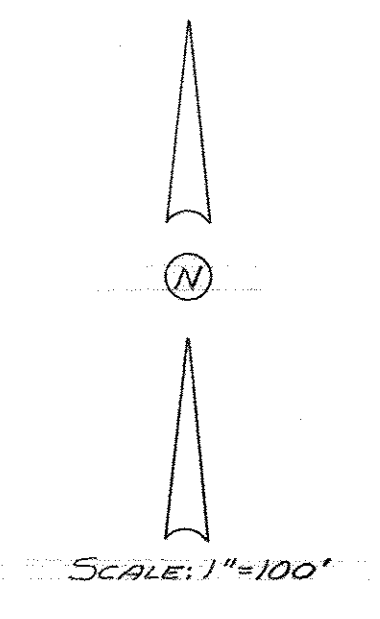
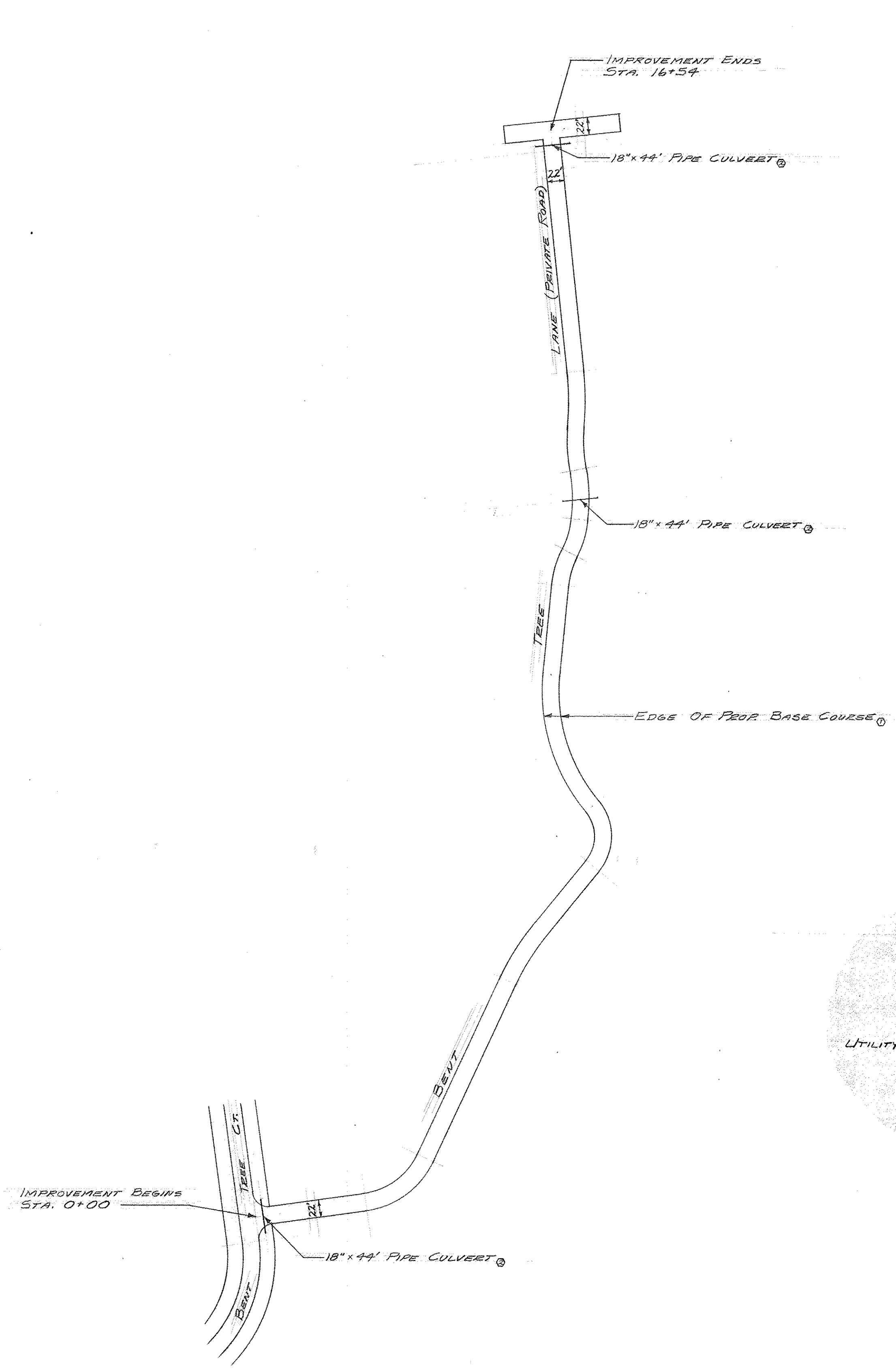
FILE NO.: 24-2572
 DATE: 11-8-78
 SHEET NO.: 4 OF 11



- LEGEND
- 6" DRAIN TILE
 - - - 6" PVC SDR 35
 - - - 8" PVC SDR 35
 - MANHOLE

- NOTES:
1. ALL JUNCTIONS TO BE MADE W/Tees OR W/tees
 2. PROVIDE BREATHER TUBES AT ALL TERMINATION POINTS
 3. STD SPECIFICATIONS FOR WATER & SEWER CONSTRUCTION & STD SPECIFICATIONS FOR ROAD & BRIDGE CONSTRUCTION SHALL APPLY TO THIS WORK
 4. DRAINAGE TILES TO BE 6" MIN DEPTH BELOW SURFACE ELEVATION. SEE PROFILE SHEET.
 5. ALL TILES UNDER ROADS TO BE PVC SDR 35 BACKFILLED W/TRENCH BACKFILL.

DRAINAGE & ROADWAY IMPROVEMENTS		
INDIAN CREEK SUBDIVISION TOWANDA ILLINOIS		
DRAWN BY JEF	FARNSWORTH & WYLIE, P.C. CONSULTING ENGINEERS 2709 MCGRAW DRIVE BLOOMINGTON, IL 61701 (309) 663-8435	FILE NO. 24-2592 BOOK NO. 1 SHEET NO. 3
DATE 6-2-86	CHECKED BY JEF FAL	



1ST. ADD. INDIAN CREEK SUBN.		
M ^{LE} LEAN COUNTY, ILLINOIS		
BENT TREE LANE		
DRAWN BY LE	FARNSWORTH & WYLIE CONSULTING ENGINEERS	FILE NO. 24-25927
CHECKED BY	BLOOMINGTON, ILLINOIS	DATE 12-5-78
BOOK NO.		SHEET NO. 1 of 1

REVISED 12-6-78 JR
REVISED 12-19-78 JR

